

CIRCLE OF HOPE SUSTAINING MEMBERS

Fred and Meleney Albert
Claudia Arnold
Tammy and Ronald Baldwin
Judge Andrea Beall and Craig Nelson
Amy and Geoffrey Boers
Velma Buck and Douglas Davis
Carlos Camargo
Gordie and Julie Clement
Kitty Coates
Jason and Aidan Cornell
Kevin and Sonja Dahl
Mary Beth Dahl
Johanna and William Dock

Nita Earsley
Ken and Barb Edmonds
Mayor Daryl and Sue Eidinger
Walt and Terry Freed
Sylvia Hagmann
Dave and Leslie Heslin
Lorraine Hirakawa
Barry and Joy Hoffman
Jesie and Andy Holden
Sheryl and Neil Holden
Myrna Jacobson
Councilmember Susan Johnson
Barry and Gretchen Johnsrud

Sam and Cindy Jones
Erik and Diksha Krierim
Joanne Larsen
Dave and Kim Lawson
Nils and Julie Luckman
Chief Micah Lundborg
Dan and Mari Lysne
Connie McCrossin
Pastors Briana and Kyle Merkle
Dr. Donald Mott
Julie Mozrall
Jeff Nelson
Carol Oberling

Craig Murray and Carol Powers
Mary and Jeff Quinn
Shelly and Bob Raetz
Rod and Chris Ray
Caitlyn and Larry Remington
Judge Kevin Ringus
Marv and Kandy Rose
Gina and Tom Sauers
Mary Schuldheisz
Elaine Smith
Shawn and David Smith
Michael Stocke
Rebecca and Ron Straka

Jon and Kelly Thieman
Thad and Emily Thompson
Peggy and Dan Thurston
Councilmember Rosanne and Aaron Tomy
Linda Troeh
Tammy and Dean Valenta
Councilmember John West
Mark and Julie Williams
Councilmember Colleen Wise
Keith and Marlene Wright

MOUNTAIN MOVERS: MAJOR DONORS (\$2,500 OR MORE OVER THE COURSE OF OUR FISCAL YEAR)

Kristi Ceder
Larry and Virginia Gordon
Greg and Cyndi Helle
Neil and Sheryl Holden

Bill and Debbie Korum
Joanne Larsen
Vic and Joanne Lindstrom
Emily and Jeremy Martinson

Georgia Meier
Jeremy Metzler
Dr. Donald Mott
Rod and Chris Ray

Earl and Joan Root
Tom Som
Rebecca and Ron Straka
Councilmember John West

THANKS TO OUR COMMUNITY PARTNERS THAT MAKE OUR MISSION POSSIBLE

1st Security Bank
AARP Foundation
Acorn Brewing
All Saints Parish
All Saints Catholic School
Anytime Fitness
Athletic Supply
BSA Troop 525
Bonney Lake Senior Center
Brightening for Children
Celebrate Seniority Multicare
Cub Scouts Troop 526
Crafters United Against Covid-19 Seattle
City of Edgewood
City of Fife
City of Milton
Columbia Bank-Fife
Comerstone Montessori School
Deer Ridge Memory Care
East Pierce Fire and rescue
Edgewood Community NOURISH Food Bank
Edgewood Community Picnic
Edgewood Cottages
Edgewood Police Department
Edward Jones, Shawn Boyer
Edwards Jones, Andy Loe
Fife City Center
Fife School District
Fife-Milton-Edgewood Chamber of Commerce
Fife Service & Towing
First Service Real Estate
Freedom Martial Arts
Girl Scouts Troop 45219
Girls FME Soccer Team
Green River College

Health Care Providers Council
Heritage Distilling Company
Inderbitzen Distributors
Kade & Vos
Kiwanis Club of Edgewood-Fife-Milton
Lutheran Community Services
Milton Police Department
Milton Senior Society
Mountain View Lutheran Church
North Pierce County Community Coalition
Old Coots on Scoots, Chapter 50
One Sleep Company
Pacific Lutheran University School of Nursing
Pierce College—Puyallup Campus
Pierce County Emergency Management
Pierce County Aging and Disability
Pierce County Health Department
Pierce County League of Women Voters
Pierce County Library
Puget Sound Energy
Puyallup City Center
Puyallup Communities in Schools
Puyallup Food Bank
Puyallup—Sumner Chamber of Commerce
Puyallup Rotary
Puyallup School District
Puyallup Valley Quilters Guild
Puyallup Hunger Task Force
St. Francis House
Sumner Senior Center
The Daffodil Festival
United Way of Pierce County
View Pointe Self Storage
WSU Master Gardeners

MARK YOUR CALENDAR AND SAVE THESE DATES



**Giving Tuesday
Tuesday, November 30, 2021**

Our online holiday giving kick off, with opportunities to support our programs at Mountain View Community Center. **Every gift will be MATCHED**, thanks to our generous sponsors!



**Hope Moves Mountains
Annual Benefit Auction
Saturday, March 26, 2022**

We are planning for an in-person auction at Emerald Downs in 2022! Mark your calendars for a fun and exciting evening that will help support *successful kids*, *hopeful families* and *active seniors*.

More details coming soon!



**MOUNTAIN VIEW
COMMUNITY CENTER**

Annual Report FY 2020—2021

Successful Kids | Hopeful Families | Active Seniors

Board of Directors

Caitlyn Remington, Board Chair
Community Volunteer

Craig Murray, Treasurer
*Corporate & Group Sales Manager,
Recreational Equipment Inc.*

Jason Cornell, Secretary
Community Volunteer

Tammy Baldwin
Community Volunteer

Shelly Raetz
President, Form Source Inc.

Dave Shaffer
Deputy, Edgewood Police Department

Tom Som
*Director of Field Operations, The Boeing Company,
Retired*

Emily Thompson
Mt View Lutheran Council Representative

Tammy Valenta
Health & Wellness Coach, Community Volunteer

Dr. Donald Mott, Emeritus Member
*Orthopedic Surgeon and Chief Medical Officer, Good
Samaritan Hospital, Retired*

**Thank you to all of our past
and current board members
for your service!**

Staff

Jesie Holden
Executive Director

Kitty Coates
Office & Facilities Manager

Rachael Gibbons
Programs Manager

Amanda Goetz
Youth & Family Programs Coordinator

Melissa Ciccone
Senior Programs Coordinator

Loy Vincent
Health & Fitness Instructor

Nita Earsley
Accountant



Hello Friends and Neighbors,

It is easy to get stuck thinking about for how far we still need to go to recover from this pandemic, but my hope is that right now we can focus on celebrating just how far we've come! Thank you for taking the time to read about the impact made in the 2020-2021 fiscal year and about the funders, donors, and partners that made it all possible.

This past year we have worked diligently to continue our focus on providing COVID relief through our youth hunger programs, senior care packages and wellness calls, navigation services, and housing and basic needs support. We retooled our large scale events to make an impact through community partnerships. In April of 2021, we reopened the Center in a safe and considerate way, getting seniors back exercising and socializing once again. We continue to mobilize and empower our neighbors to further our mission of developing *successful kids*, *hopeful families*, and *active seniors*.

Earlier this year, we had a great example of this. There was an apartment fire in Edgewood that displaced 25 families. MVCC worked with The Red Cross and the apartment manager to support families with emergent needs. The Center served as a donation collection site, and our neighbors donated over \$5,000 worth of gift cards and other essential items that went directly to the families. One mom had just started a new school year at PLU studying to be a nurse. On top of gift cards, food, and other essential items, she was very appreciative for the new school supplies MVCC offered. She gave us the sizes for her 2-year-old son, and because our neighbors rallied, we were able to give her clothes and 4 boxes of diapers that same week!

It is our privilege to do our work in partnership with others, providing the structure and space for us to collectively make positive change in our community. We look forward to bringing back more programming, and we plan to launch some new programs in 2022. On behalf of our board and team, I offer my sincere gratitude for your faithful support and partnership. Together, we continue to create a *community in which all experience belonging and wellness*.

With gratitude,

Jesie Holden
Executive Director



OUR IMPACT

Provided backpacks and school supplies for **1,000** local students through 4 drive up locations with a total of **310** volunteer hours logged.



Successful Kids

"In a time when many people struggle to be hopeful, MVCC has stepped up to meet the day-to-day needs of families and kids. While the food and other resources meet these physical needs, the act of giving itself creates hope and demonstrates that families are not alone. Thank you MVCC and your supporters for 'seeing' our families and kids."

Brian Neufeld, Counselor
at Columbia Jr. High

Distributed **7,072** supplemental food packs to over **600** students serving **9** local schools.



Provided housing or other basic needs to support **63** families, and navigated **220** more to additional resources. **95%** reported an increase in at least one identified sector for self-sufficiency.



Hopeful Families

"Due to COVID both my husband and myself were laid off and struggling to make ends meet. This program helped my family get through these hard times by providing resources, food and hope as well as pay off my utility balance! Today I'm happy to say I can breathe a little bit better thanks to the MVCC team stepping in and supporting my family in any way they could; for that I'm more than grateful!"

—Good Neighbor Fund Recipient

Supported **45** families with Thanksgiving meals, **800** families with winter break food boxes, and organized sponsors for **45** families for Christmas gifts, clothing, and food.



Active Seniors

Offered **91** free senior fitness classes held both virtually and in person. Since moving back to in-person classes in April 2021, **100%** reported they now have an increase in healthy activity.



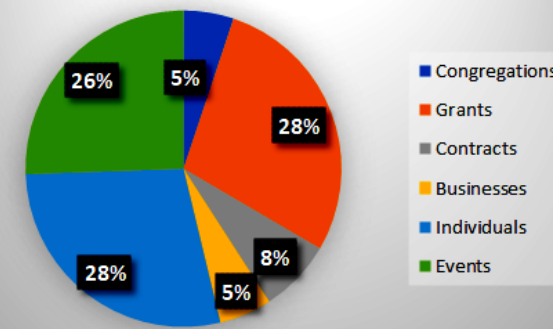
"It has been so lonely for all of us during COVID. A lot of us are without our spouses now and we need each other. We are so thankful to be meeting and exercising, we have really missed each other, and it has been so good to be able to catch up on the missed time."

—Senior Programs Participant

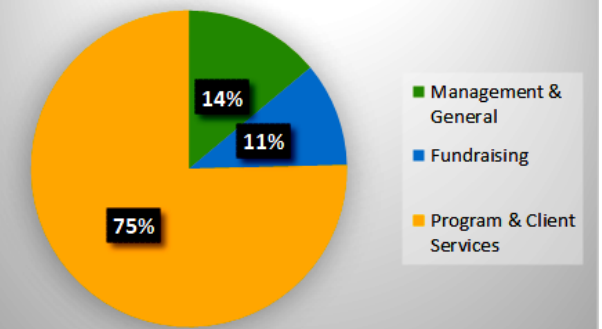


FINANCIAL REPORT

INCOME



EXPENSES



For the recently completed fiscal year, total income was \$435,374, while expenses tallied \$436,105. We had a very successful year for diversifying our funding. Although we were not able to hold our annual auction, we were able to take advantage of increased grant opportunities and CARES funding provided by Pierce County. Our donors continued in their faithful giving, allowing MVCC to proceed with Covid relief programming and to successfully navigate reopening in the Spring of 2021. With fundraising expenses down, we were able to direct more resources straight to developing successful kids, hopeful families, and active seniors.

THANK YOU TO OUR FUNDERS AND FINANCIAL SUPPORTERS

Foundation and Grant Support

CHI Franciscan Foundation
Employees Community Fund of Boeing
MultiCare Community Partnership Fund
Names Family Foundation
Pierce County Connected Fund
School's Out Washington
The Albertsons Companies Foundation
The Florence B. Kilworth Foundation
The Gottfried & Mary Fuchs Foundation
Underprivileged Children's Fund—Fife-Milton
United Way of Pierce County
Woodworth Family Foundation

Congregational Support

Lifespring Foursquare Church
Milton United Methodist Church
Mountain View Lutheran Church
Northwest Church

Business and Organization Support

1st Security Bank
AA2 Repair and Maintenance, LLC
AmazonSmile
Bill Korum's Puyallup Nissan
Burns Accounting & Tax Solutions
City of Edgewood
Columbia Bank
Copy Wrights
Creative 24
Distinctive Dentistry
Doug Walker, John L Scott
Fife Education Association
Fife School District FBIA
Fred Meyer/Kroger
Freedom Martial Arts
Freightliner Northwest
Gordon Trucking
Harmony Health Chiropractic

Health Care Providers Council
Keller Williams Realty
Kiwanis Club of Edgewood-Fife-Milton
Luce & Associates
Medosweet Farms
Milgard Manufacturing, Inc.
Mountain View Lutheran Church
Milton Senior Society
Old Coots on Scoots #50
Pierce County CARES
Puget Sound Energy
The Mill Steakhouse and Spirits
Thrivent Financial
Transblue Tacoma
University Place Refuse and Recycling
View Pointe Self Storage

TOP SPONSORS



1ST SECURITY BANK